


**Pump specifications:**

Type.....	PT100 D130
Design.....	Double-acting piston pump
Max. flow .....	30 m <sup>3</sup> /hour (132 US gpm)
Max. pressure.....	18 mwc (59 ft.)
Max. suction lift.....	9,6 mwc (32 ft.)
Engine .....	Hatz 1B30 DriveOn®
Emission standard .....	Stage V
Fuel consumption .....	< 0,7 L/hour
Canopy .....	L9-15
Connections.....	DN100 (4")
Sound level.....	Approx. 49 dB(A) at 10 m
Dry weight.....	950 kg (2095 lbs.)

**FEATURES**
**PT wellpoint pump**

The PT wellpoint pump has been designed for vertical- and horizontal dewatering applications. These positive displacement pumps are fully self-priming and are capable of handling air, water or any mixture of both without requiring a separate priming system. Furthermore, these pumps are capable of running dry indefinitely without causing damage or excessive wear to any part of the unit.

**World-class performance**

The PT pump package offers lowest cost of ownership and provides a reliable and durable solution to the challenges facing dewatering companies around the world. The technology has been tried and tested in the field and has revolutionised the vertical- and horizontal dewatering market on a global scale, by offering unmatched performance at minimal costs thereby improving the return on investment (ROI).

**Key features PT pumps**

- Self-priming, no additional priming system required
- Excellent suction capabilities on all flows
- High pump efficiency
- Can run dry indefinitely
- Cheap and easy-to-replace wear parts
- 100% mechanical technology
- Extended unit life time

**Complete package designed & built by BBA Pumps**

- Complete in-house design & production
- Over 70 years of experience in the market
- Extensive testing facility in-house
- Contemporary & functional design
- Durable & eco-friendly materials

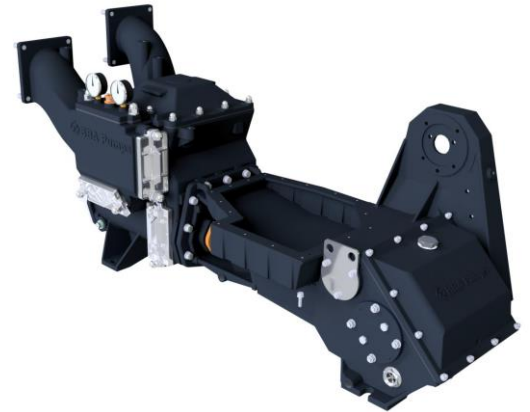
**After sales service & product support**

- Single supplier for parts, spares & accessories
- Dedicated customer help-desk (24h service)
- Dedicated service department in-house
- Global parts distribution network
- Optional global on-site servicing
- Extensive training options available (technical & commercial), on-site or in-house



**STANDARD TECHNICAL SPECIFICATIONS**
**BBA double-action piston pump**

Pump type.....	PT100 D130
Max. flow.....	30 m <sup>3</sup> /hour (132 US gpm)
Max. head.....	18 mwc (59 feet)
Max. suction lift.....	9,6 mwc (32 feet)
Speed.....	66 strokes/min
Pump casing.....	Cast iron GG25
Pump covers.....	Aluminium
Cylinder liners.....	Stainless steel Ø 130 mm
Piston cups.....	Leather
Piston rods.....	Stainless steel 304
Shaft seal.....	Gland packing
Valve rubbers.....	Stainless steel core with rubber layer
Valve seats.....	Composite (optionally available in bronze)
Stone catcher.....	Cast iron GG25
Measure equipment.....	2 vacuum gauges


**Engine**

Engine brand.....	Hatz
Engine type.....	1B30 DriveOn®
Oil change interval.....	1500 running hours
Maximum power output.....	2,3 kW (3.1 Hp)
Engine speed.....	1550 RPM
Fuel consumption.....	260 g/kWh
Displacement.....	0,347 l
Cooling system.....	Air cooled
Starting method.....	Electric start/stop
Oil sump.....	10 litres (2.63 US gallon)
Exhaust emission EU.....	Stage V


**DriveOn®**
**Hatz control panel**

- Operating display
- Hours counter
- Key start switch
- Warning light "oil pressure"
- Warning light "charge control"

**Fuel system**

- Fuel tank 130 L (34 US gallon)
- Fuel tank cap Ø 60 mm (2.5 inch)
- Mechanical fuel injection system
- Fitted with water separator & extra in-line fuel filter

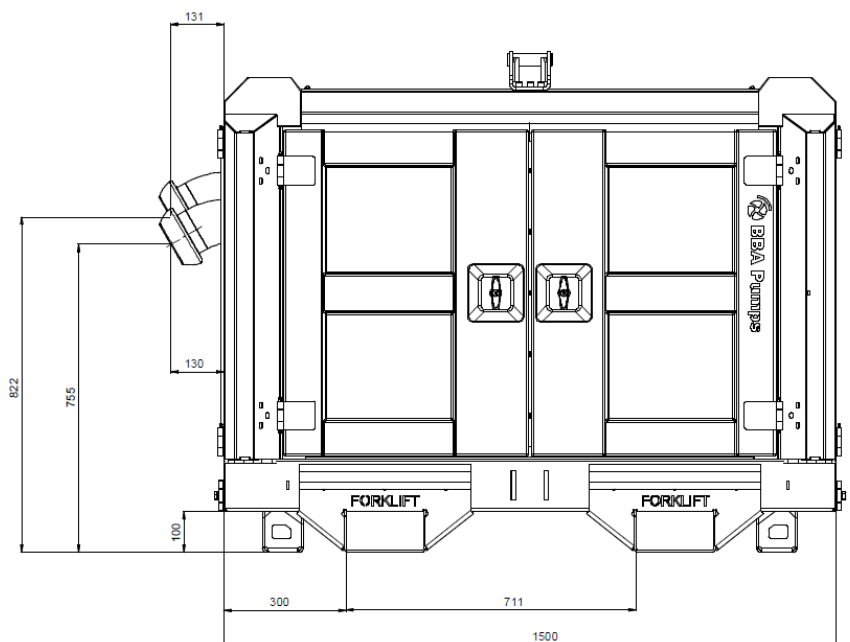
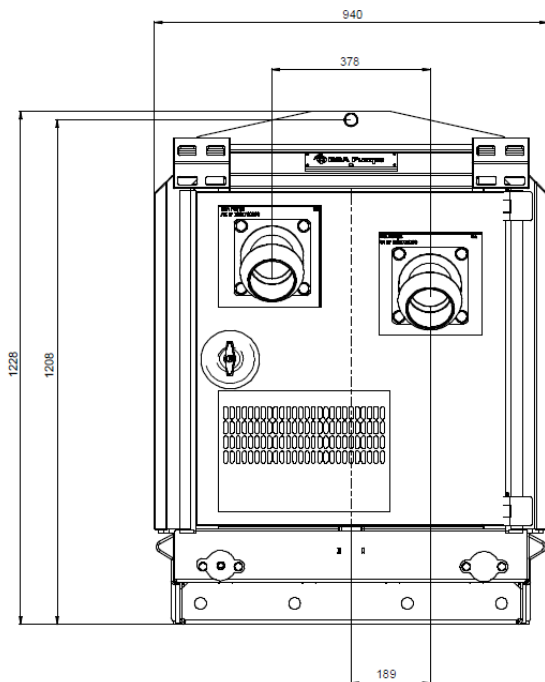
**Electrical system & safety features**

- Nominal voltage 12 Volt
- Premium quality battery
- Low oil pressure shut down

### CANOPY L9-15

#### BBA super silent canopy

- Canopy type..... L9-15
- Dimensions L x W x H ..... 1500 x 940 x 1228 mm
- Dimensions L x W x H ..... 59 x 37 x 48,3 inch
- Basic frame ..... Hot dip galvanized
- Doors ..... 6 easy-access doors (lockable)
- Fuel tank ..... Composite net 130 L (34 US gallon)
- Fuel tank autonomy ..... 185 - 260 hours (according to load)
- Fuel tank cap ..... 60 mm (2.5 inch)
- Lifting point ..... Fitted with single lifting point
- Forklift pockets..... Fitted with 2 forklift pockets
- Stackable ..... Canopy is stackable
- Connections..... Please consult "list auxiliary items"
- Exhaust system ..... Fully integrated in canopy
- Documentation box..... BBA Pumps user manual and warranty book
- Additional ..... Fitted with oil-water separator



Actual dimensions (in mm) may vary depending on selected quick couplings.



**Easy access points**  
Allows access to the cylinders, valves, stuffing boxes and other critical areas for easy cleaning and maintenance.



**DriveOn® technology**

- Service interval 1500 hours
- 66% less often maintenance
- Saving on engine oil & filters
- Ergonomic design



**Fuel tank**  
Fully bunded, corrosion-free, 130 litre, high-density polyethylene fuel tank, located in base of canopy.



**Integrated stone catcher**  
All PT pumps feature a stone catcher protecting the pump internals from any suspended solids. The stone catcher has easy-access cleaning covers and comes with dual vacuum gauges to monitor pump performance.



**Safety**  
Extremely durable and lockable T-locks offering perfect grip.



**4 Year limited warranty**  
The BBA limited warranty covers years or operating hours whichever occurs first. For more details please consult the BBA warranty book.

Pictures used are for illustration purposes only.